

### SRB-01回转支承轴承 Slewing ring bearings



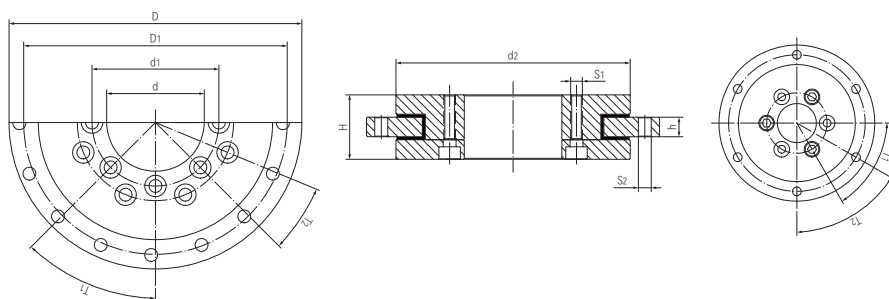
### 产品特性 Product features

- 适合高速应用
- 运行平稳，无噪音
- 标准滑动片材料TEFPLAS® B
- 可选抗静电滑动片TEFPLAS® C
- 内外环为高强度铝合金
- 可选不锈钢盘
- 自润滑、免维护
- 适用于无尘室
- For high speed applications
- Smooth operation and noise-free
- Standard sliding pads made from TEFPLAS® B, available ESD material TEFPLAS® C
- Inner and outer rings made of anodized aluminum, available stainless steel rings
- Self-lubricating, maintenance-free
- Cleanroom applications possible

### 产品技术数据表 Technical data table

项目 Item	单位 Unit	SRB-01-20	SRB-01-30	SRB-01-50	SRB-01-60	
重量 Weight	kg	0.2	0.4	1.0	1.1	
最大旋转速度 Max. Rotation Speed	r/min	600	400	300	270	
最大静载荷 Max. Static Load	轴向 Axial	N	9500	16000	25000	31000
	径向 Radial	N	2600	4100	5900	8900
最大动载荷 Max. Dynamic Load	轴向 Axial	N	2500	4300	6200	9400
	径向 Radial	N	390	890	1480	1780
最大允许倾覆力矩 Max. Permitted Overturning	Nm	60	120	370	500	

### 标准规格 Standard specifications



产品编码 Part No.:

SRB-01-20

内径 Inner diameter

系列号 Design No.

产品编码 Part No.	d [mm]	d <sub>1</sub> [mm]	d <sub>2</sub> ±0.2 [mm]	*D [mm]	D <sub>1</sub> [mm]	H [mm]	h [mm]	T <sub>1</sub> [mm]	T <sub>2</sub> [mm]	S <sub>1</sub> [mm]	S <sub>2</sub> [mm]
SRB-01-20	20	31	60	80	70	24	8	6x60°	6x60°	M4	4.5
SRB-01-30	30	42.5	85	100	91	29	10	8x45°	8x45°	M4	4.5
SRB-01-50	50	65	120	150	135	33	10	8x45°	16x22.5°	M6	6.6
SRB-01-60	60	74	130	160	145	33	10	10x36°	20x18°	M5	5.5

\*D: 公差标准 Tolerance according to ISO 2768 mK